

Safety, Security & PPE

Poloshirt

- » Available in black, bottle green, heather grey, maroon, navy, red, royal & white - please specify when ordering
- » 50% Polyester 50% Cotton
- » Knitted collar, hemmed sleeve & bottom
- » 3 Self Coloured Button Placket
- » Washable at 60 Degrees

Size Guide:

| S | M | L | XL | 2XL | 3XL | 4XL | Price |
|-------|-------|-------|-------|-------|-------|-------|--------|
| 36-38 | 40-41 | 42-44 | 46-48 | 50-52 | 54-55 | 56-58 | P.O.A. |

NEW



Sweatshirt

- » Available in black, bottle green, heather grey, maroon, navy, red, royal & white - please specify when ordering
- » 50% Polyester 50% Cotton
- » Lycra ribbed cuffs, welt & neck
- » Set in sleeves
- » Twin needle stitching at neck, shoulders, armhole & sleeves
- » Brushed effect for superior comfort & look

Size Guide:

| S | M | L | XL | 2XL | 3XL | 4XL | Price |
|-------|-------|-------|-------|-------|-------|-------|--------|
| 36-38 | 40-41 | 42-44 | 46-48 | 50-52 | 54-55 | 56-58 | P.O.A. |

NEW



NEW



Fleece

- » Available in black, bottle green, navy, red & royal - please specify when ordering
- » 100% polyester super anti-pill micro fleece
- » Twin needle stitching & elasticated cuffs
- » Full self coloured zip with zip puller
- » 2 self coloured covered zipped pockets with zip pullers
- » Elasticated pull cords & toggles
- » Hanger loop inside neck
- » Cadet style collar & half moon yoke

Size Guide:

| S | M | L | XL | 2XL | 3XL | 4XL | Price |
|-------|-------|-------|-------|-------|-------|-------|--------|
| 36-38 | 40-41 | 42-44 | 46-48 | 50-52 | 54-55 | 56-58 | P.O.A. |

Embroidery Services



i Information

ALL THE ABOVE
PRODUCTS, ALONG
WITH LOTS MORE
WHICH ARE
AVAILABLE, CAN BE
EMBROIDERED WITH
YOUR OWN COMPANY
DETAILS
PLEASE CALL FOR MORE
DETAILS & PRICES



Fire Extinguishers



PRICES
HELD

i Information

MAINTENANCE, INSTALLATION,
FIRE RISK ASSESSMENTS
& TRAINING AVAILABLE
- CALL FOR DETAILS

i Information

ALL EXTINGUISHERS
ARE APPROVED
TO BS EN 3

| Description | Cap. | Fire Rating | Model | Price |
|----------------|------|---------------------|-------|---------|
| Carbon Dioxide | 2 kg | 55 B | C2/1 | £50.71 |
| | 5 kg | 70 B | C5/1 | £100.00 |
| AFF Foam | 2L | 8 A : 55 B | F2/1 | £31.43 |
| | 6L | 21 A : 183 B | F6/1 | £48.57 |
| | 9L | 27 A : 233 B | F9/1 | £57.14 |
| ABC Powder | 1 kg | 5 A : 55 B | P1/1 | £24.29 |
| | 2 kg | 13 A : 89 B | P2/1 | £27.14 |
| | 6 kg | 43 A : 233 B | P6/1 | £41.43 |
| | 9 kg | 55 A : 233 B | P9/1 | £54.29 |
| Water | 6L | 13 A | W6/1 | £45.71 |
| | 9L | 21 A | W9/1 | £55.71 |
| Water Additive | 6L | 21 A | WA6/2 | £50.00 |
| Wet Chemical | 6L | 21 A : 113 B : 75 F | WC6/1 | £98.57 |

| Fire Risks | Water | Water Additive | Carbon Dioxide | AFF Foam | ABC Powder | Wet Chemical |
|--|-------|----------------|----------------|----------|------------|--------------|
| Freely burning materials: Wood, Paper, Textiles etc. | ✓ | ✓ | | ✓ | ✓ | ✓ |
| Flammable Liquids: Petrol, Oil, Fats, Paints etc. | | | ✓ | ✓ | ✓ | ✓ |
| Flammable Gases | | | | | ✓ | |
| Electrical Hazards | | | ✓ | | ✓ | |
| Cooking fats - such as deep fat fryers oils | | | | | | ✓ |

Fire Control

A

I

J

B

H

C

E

D

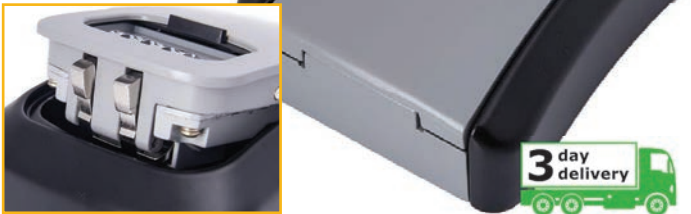
F

PRICES
HELD

| Item | Description | Model | Price |
|------|---|--------|---------|
| A | Fire Blanket - 1200 x 1200mm | FB12 | £25.71 |
| B | Single Extinguishers Polyethylene Cabinet - for wall, floor or post mounting | ECS | £60.00 |
| C | Double Extinguishers Polyethylene Cabinet - for wall, floor or post mounting | ECD | £91.43 |
| D | High Impact Polyethylene & Chemical Resistant Single Extinguisher Stand | ESS | £32.86 |
| E | High Impact Polyethylene & Chemical Resistant Double Extinguisher Stand | ESD | £44.29 |
| F | Mobile FireKart, to hold two fire extinguishers & a fire bucket | MFK | £121.43 |
| F | Mobile FireKart with Rotary Hand Bell, to hold two fire extinguishers & a fire bucket | MFKRHB | £142.86 |
| H | Polypropylene Fire Bucket with Lid & Handle | FBK | £25.71 |
| I | Site Alarm - Diecast Aluminium Hand Bell (65dB at 30M) | RHB | £41.43 |
| J | Site Alert Alarm (118dB & 5 units can be linked) | ESA | £65.71 |

Wall Mounted Key Storage

- » Wall mounted key storage for allowing access to authorised persons only
- » 4 wheel changeable combination
- » Wall mounted - fixings included



| Overall Size H x W x D mm | Model | Price |
|------------------------------|-------|--------|
| 115 x 95 x 40 | KSC3K | £25.71 |
| 142 x 100 x 54 | KSC4K | £32.14 |

Wall Mounted Key Storage

- » Wall mounted key storage for allowing access to authorised persons only
- » 12 digit changeable combination (4000 combination possibilities)
- » Wall mounted - fixings included



| Overall Size H x W x D mm | Model | Price |
|------------------------------|-------|--------|
| 120 x 78 x 56 | KSC2K | £33.57 |

Weatherproof Padlocks

- » High security steel padlocks to withstand physical attacks
- » Exclusive cover protects from water, ice, dirt & grime
- » Dual ball bearing locking for added protection from prying & hammering



6121

| Body Width mm | Shackle Diameter mm | Shackle Length mm | Model | Price |
|---------------|---------------------|-------------------|-------|--------|
| 54 | 8 | 29 | 6121 | £39.21 |
| 61 | 10 | 35 | 6125 | £41.71 |
| 67 | 11 | 35 | 6127 | £46.36 |

Combination Padlocks

- » Brass finish padlock with a hardened steel shackle
- » 4 wheel changeable combination with 10,000 potential combinations



175LHD

| Body Width mm | Shackle Diameter mm | Shackle Length mm | Model | Price |
|---------------|---------------------|-------------------|--------|--------|
| 51 | 8 | 25 | 175D | £37.36 |
| 51 | 8 | 58 | 175LHD | £39.57 |

Laminated Steel Padlocks

- » Individually laminated steel body
- » Hardened boron alloy shackle for superior cut resistance
- » Dual Locking levers provide extra pry resistance
- » Hardened steel bottom plates for extra drill resistance



| Body Width mm | Shackle Diameter mm | Shackle Length mm | Model | Price |
|---------------|---------------------|-------------------|-------|--------|
| 40 | 7 | 19 | 3EURD | £15.43 |
| 51 | 10 | 25 | 5EURD | £18.29 |
| 40 | 7 | 38 | 3LF | £17.21 |
| 40 | 7 | 51 | 3LH | £18.64 |



Key Cabinets - Electronic

- » Durable powder coated finish
- » Adjustable hook bars
- » Colour coded hook bars, key tags & removable control index card
- » Four mounting holes in back of cabinet
- » Electronic cam lock

| Capacity | Overall Size H x W x D mm | Model | Price |
|----------|------------------------------|----------|---------|
| 20 Keys | 250 x 170 x 75 | BR20ECAM | £80.29 |
| 35 Keys | 320 x 230 x 75 | BR35ECAM | £87.57 |
| 42 Keys | 320 x 230 x 75 | BR42ECAM | £89.57 |
| 58 Keys | 320 x 230 x 95 | BR58ECAM | £104.07 |
| 77 Keys | 320 x 230 x 95 | BR77ECAM | £109.29 |

Victor Euro Grade I Safes

- » Certified to EN1443-1 (Euro Grade I) & is AiS Approved
- » £10,000 Cash Rating (x10 For Valuables)
- » Comes with double-bit high security lock with 2 keys
- » 3-walled Door with 3-sided bolt locking
- » Running bar behind hinge
- » Door opening angle 180°
- » Double walled body
- » Fixing points in the centre of the rear & floor for fixing



| External Size H x W x D mm | Internal Size H x W x D mm | No of Shelves | Key Locking | | Electronic Locking | |
|-------------------------------|-------------------------------|------------------|-------------|-----------------|--------------------|-----------------|
| | | | Model | Model | Model | Model |
| 400 x 400 x 270 | 350 x 341 x 157 | 1 | VICTOR1-1 | £715.00 | VICTOR1-1E | £970.00 |
| 400 x 420 x 420 | 350 x 361 x 307 | 1 | VICTOR1-2 | £890.00 | VICTOR1-2E | £1145.00 |
| 500 x 500 x 420 | 450 x 441 x 307 | 1 | VICTOR1-3 | £990.00 | VICTOR1-3E | £1245.00 |
| 650 x 500 x 420 | 600 x 441 x 307 | 1 | VICTOR1-4 | £1055.00 | VICTOR1-4E | £1310.00 |
| 800 x 500 x 420 | 750 x 441 x 307 | 1 | VICTOR1-5 | £1270.00 | VICTOR1-5E | £1525.00 |
| 1150 x 500 x 420 | 1100 x 441 x 307 | 2 | VICTOR1-6 | £1690.00 | VICTOR1-6E | £1945.00 |

Victor Euro Grade II Safes

- » Certified to EN1443-1 (Euro Grade II) & is AiS Approved
- » £17,500 Cash Rating (x10 For Valuables)
- » Comes with double-bit high security lock with 2 keys
- » 3-walled Door with 3-sided bolt locking
- » Running bar behind hinge
- » Door opening angle 180°
- » Double walled body
- » Fixing points in the centre of the rear & floor for fixing



| External Size H x W x D mm | Internal Size H x W x D mm | No of Shelves | Key Locking | | Electronic Locking | |
|-------------------------------|-------------------------------|------------------|-------------|-----------------|--------------------|-----------------|
| | | | Model | Model | Model | Model |
| 450 x 450 x 465 | 350 x 340 x 305 | 1 | VICTOR2-1 | £1605.00 | VICTOR2-1E | £1860.00 |
| 550 x 550 x 465 | 450 x 440 x 305 | 1 | VICTOR2-2 | £1895.00 | VICTOR2-2E | £2150.00 |
| 700 x 550 x 465 | 600 x 440 x 305 | 1 | VICTOR2-3 | £2060.00 | VICTOR2-3E | £2315.00 |
| 850 x 550 x 465 | 750 x 440 x 305 | 1 | VICTOR2-4 | £2310.00 | VICTOR2-4E | £2565.00 |
| 1050 x 550 x 465 | 950 x 440 x 305 | 2 | VICTOR2-5 | £2600.00 | VICTOR2-5E | £2855.00 |
| 1350 x 550 x 465 | 1250 x 440 x 305 | 3 | VICTOR2-6 | £2975.00 | VICTOR2-6E | £3230.00 |

Victor Euro Grade III Safes

- » Certified to EN1443-1 (Euro Grade III) & is AiS Approved
- » £35,000 Cash Rating (x10 For Valuables)
- » Comes with double-bit high security lock with 2 keys
- » 3-walled Door with 3-sided bolt locking
- » Running bar behind hinge
- » Door opening angle 180°
- » Double walled body
- » Fixing points in the centre of the rear & floor for fixing



| External Size H x W x D mm | Internal Size H x W x D mm | No of Shelves | Key Locking | | Electronic Locking | |
|-------------------------------|-------------------------------|------------------|-------------|-----------------|--------------------|-----------------|
| | | | Model | Model | Model | Model |
| 450 x 450 x 465 | 350 x 340 x 305 | 1 | VICTOR3-1 | £1780.00 | VICTOR3-1E | £2035.00 |
| 550 x 550 x 465 | 450 x 440 x 305 | 1 | VICTOR3-2 | £2165.00 | VICTOR3-2E | £2420.00 |
| 700 x 550 x 465 | 600 x 440 x 305 | 1 | VICTOR3-3 | £2320.00 | VICTOR3-3E | £2575.00 |

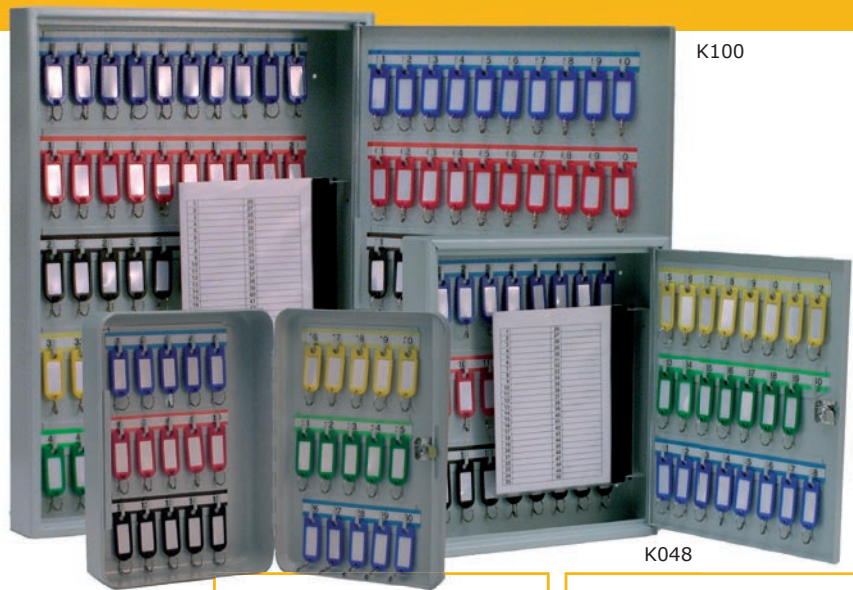
Safety, Security & PPE

Keystor

- » Sturdy steel cabinets with a tough powder coated, light grey finish
- » Fixed coloured & numbered hook bars, with matching key tabs
- » Removable key control index with the 3 larger models
- » Key locking complete with 2 keys



K064



K100

K030



K020



K030

| Description | Overall Size H x W x D mm | Model | Price |
|----------------------|------------------------------|-------|----------------|
| 20 Hook Key Cabinet | 255 x 180 x 80 | K020 | £42.97 |
| 30 Hook Key Cabinet | 300 x 210 x 80 | K030 | £54.08 |
| 42 Hook Key Cabinet | 320 x 245 x 80 | K042 | £73.64 |
| 48 Hook Key Cabinet | 350 x 300 x 80 | K048 | £121.54 |
| 64 Hook Key Cabinet | 450 x 300 x 80 | K064 | £155.96 |
| 100 Hook Key Cabinet | 550 x 380 x 80 | K100 | £226.44 |

System Key Cabinets - The total solution for the storage of keys

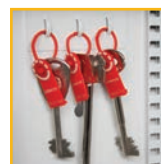


- » Pressed steel construction (1.5mm thick body & door)
- » Removable control index for added security (except KC020)
- » Adjustable hook bars cater for different key lengths
- » Keytabs are coloured & numbered to match hook bars
- » Supplied with security camlock c/w 2 keys
- » Combination or electronic locks available - *call for details*
- » Closed loops & security seals feature, provides an un-tamperable method of key restriction

| Capacity | Overall Size H x W x D mm | Model | Price |
|----------|------------------------------|-------|----------------|
| 20 Keys | 260 x 185 x 80 | KC020 | £83.71 |
| 30 Keys | 305 x 215 x 80 | KC030 | £108.44 |
| 48 Keys | 355 x 300 x 80 | KC048 | £194.64 |
| 64 Keys | 450 x 300 x 80 | KC064 | £255.16 |
| 100 Keys | 550 x 380 x 80 | KC100 | £309.82 |
| 200 Keys | 550 x 380 x 140 | KC200 | £569.89 |

'Key Vault' Security Key Cabinets

- » 2.5mm fabricated steel construction
- » Adjustable hook bars cater for different key lengths
- » Removable control index for added security
- » Keytabs are coloured & numbered to match hook bars
- » Supplied with euro profile security deadlock lock c/w 2 keys
- » Combination or electronic locks available - *call for details*
- » Closed loops & security seals feature, provides an un-tamperable method of key restriction

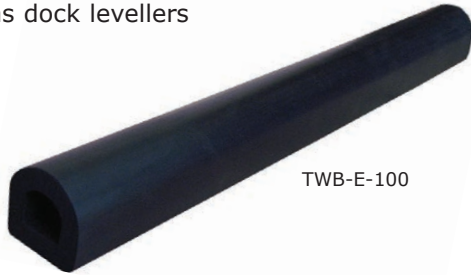


| Capacity | Overall Size H x W x D mm | Model | Price |
|-------------|------------------------------|--------|------------------|
| 30 Keys | 305 x 230 x 70 | KV030 | £159.09 |
| 48 Keys | 355 x 300 x 80 | KV048 | £224.78 |
| 100 Keys | 550 x 380 x 80 | KV100 | £386.36 |
| 200 Keys | 550 x 380 x 140 | KV200 | £635.44 |
| 400 Keys | 550 x 730 x 140 | KV400 | £1,058.27 |
| 600 Keys | 550 x 730 x 205 | KV600 | £1,295.18 |
| 48 Bunches | 355 x 300 x 140 | KVD048 | £257.67 |
| 100 Bunches | 550 x 380 x 140 | KVD100 | £458.13 |
| 200 Bunches | 550 x 730 x 140 | KVD200 | £759.35 |



Dock Bumpers

- » Reduce damage to loading docks & buildings caused by vehicle impact
- » The use of rubber dock bumpers, cushions the impact thus minimising ongoing maintenance requirements
- » The correct thickness bumper also helps with the positioning of loading dock equipment such as dock levellers



TWB-E-100

+ Priced per metre

*7 holes recommended per 3M length

| Description | Model | Price |
|--|-----------|----------------|
| 100 x 100 D-Section - lengths up to 3M | TWB-E-100 | £90.44+ |
| Optional steel fixing strip for TWB-E-100 | TWB-EST | £25.01+ |
| Fixing holes drilled in TWB-E-100 as required* | TWB-EH | £6.37 |
| Fixing: 12mm dia x 135mm long - for concrete | TWB-F1 | £3.54 |

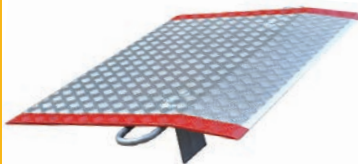


TWB-1018-4

| Overall Size mm | Thickness mm | Fixing Holes | Fixing Required | Model | Price |
|--|--------------|--------------|-----------------|------------|----------------|
| 254 x 457 | 50 | 2 | TWB-F4 | TWB-1018-2 | £49.19 |
| 254 x 457 | 100 | 2 | TWB-F4 | TWB-1018-4 | £82.32 |
| 254 x 457 | 150 | 2 | TWB-F5 | TWB-1018-6 | £100.00 |
| 254 x 762 | 50 | 3 | TWB-F4 | TWB-1030-2 | £68.40 |
| 254 x 762 | 100 | 3 | TWB-F4 | TWB-1030-4 | £105.31 |
| Washer to suit all TWB-XXXX-X Bumpers - 2½" | | | | TWB-W | £2.70 |
| Fixing: 16mm dia x 180mm long - for concrete | | | | TWB-F4 | £4.84 |
| Fixing: 16mm dia x 220mm long - for concrete | | | | TWB-F5 | £8.84 |

Dockplates

- » Used for (un)loading vehicles from a raised loading area
- » Typically for use with pallet trucks, sack trucks, roll cages & pedestrian access
- » Standard features; manufactured from high tensile aluminium with built in anti-slip finish, loop type handles for movement & one pair of locking legs to prevent movement
- » Options; fork truck handles (FTH-1) for movement by fork truck (recommended for plates marked*) & side curbs with castors (SCC-2) to aid movement



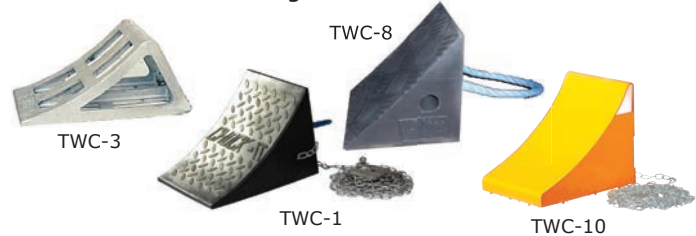
Other sizes & capacities available on request - please call for details

| Overall Size W x L mm | Height Differential | | Load Cap. kg | Model | Price |
|--|---------------------|----------|--------------|--------|-----------------|
| | Max Poss. | Max Rec. | | | |
| 915 x 1220 | 178 | 125 | 770 | 3648 | £844.61 |
| 1220 x 610 | 76 | 50 | 2040 | 4824 | £684.43 |
| 1220 x 915 | 127 | 90 | 1360 | 4836 | £842.27 |
| 1220 x 915 | 127 | 90 | 2450 | H4836* | £1064.91 |
| 1220 x 1220 | 178 | 125 | 1020 | 4848* | £1000.13 |
| 1220 x 1220 | 178 | 125 | 1810 | H4848* | £1299.32 |
| 1220 x 1525 | 228 | 160 | 810 | 4860* | £1156.80 |
| 1525 x 1220 | 178 | 125 | 1270 | 6048* | £1154.44 |
| Fork Truck Lifting Handles (pair) | | | | FTH-1 | £210.85 |
| Side Curbs with castors for easy movement (pair) | | | | SCC-2 | £338.08 |

Wheel Chocks



- » Wheel chocks are a low cost effective way of minimising the unexpected movement of vehicles whilst parked or being (un)loaded
- » Moulded rubber units have built-in lifting handles
- » An anti-theft retaining chain is available



| Description | Overall Size L x W x H mm | Model | Price each |
|-----------------|---------------------------|--------|----------------|
| Rubber Chock | 270 x 190 x 190 | TWC-1 | £46.47 |
| Retaining Chain | 5M Long | TWC-2 | £56.80 |
| Aluminium Chock | 400 x 180 x 180 | TWC-3 | £117.23 |
| Rubber Chock | 150 x 175 x 150 | TWC-8 | £31.60 |
| Steel Chock | 268 x 200 x 230 | TWC-10 | £45.89 |

Dock Lights



- » Swings & pivots, allowing the light to be positioned to illuminate the inside area of a vehicle during (un)loading
- » All units emit 1000 lumen light output
- » Extended arm length of 1000mm
- » IP21 rated for indoor applications only

| Description | Model | Price |
|---|-------------|----------------|
| Standard Plus Dock Light - 110v 15W LED | TWDL-3L-110 | £372.79 |
| Standard Plus Dock Light - 240v 15W LED | TWDL-3L-240 | £372.79 |
| Deluxe Dock Light - 100v/240v 18W | TWDL-4L-240 | £412.68 |

PVC Strip Curtains

- » Bespoke-made curtains to fit any location & opening
- » Light to heavy duty use
- » Ambient or freezer grade
- » Pedestrian & forklift friendly
- » Supplied ready to hang

i Information

**DESPATCHED
WITHIN 2/3 DAYS
OF ORDERING**

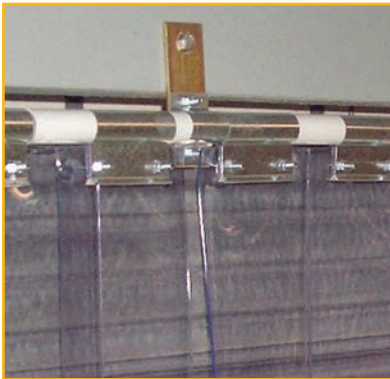


- » High quality clear PVC
- » DOP & DEHP free

- » Flexible -15°C to +50°C (polar to -25°C)
- » UV stabilisers & high impact resistance

Swivel-hinge

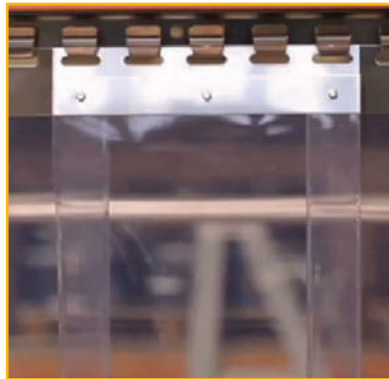
For heavy & frequent use by forklifts. Strips bolted into hinges so they can't be pulled down.



- » Strip widths: 300 & 400mm
- » Strip thickness: 3 & 4mm
- » Overlap options: Min & Max

Hook-on

For pedestrian, pallet truck & occasional forklift use. Available in galvanised or stainless steel.



- » Strip widths: 200, 300 & 400mm
- » Strip thickness: 2, 3 & 4mm
- » Overlap options: Min, Med & Max

Quickmount™

For pedestrian areas where safety is key. No steel plates, so no one can be hurt if strips are dislodged.



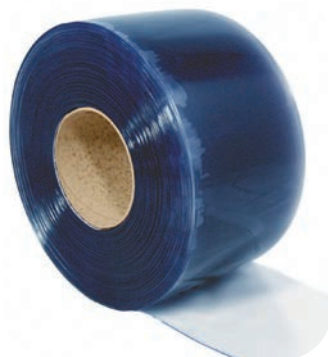
- » Strip widths: 200, 300 & 400mm
- » Strip thickness: 2, 3 & 4mm
- » Overlap options: Min, Med & Max

PVC in standard grade, polar grade, double ribbed & anti-UV

Replacement Strips & Rolls

Available in all sizes & formats. Supplied in 50M rolls or cut to any length & priced per metre

**EXPRESS
DELIVERY**



**ALL CURTAINS
PRICED INDIVIDUALLY
BASED ON HEADRAIL
& PVC OPTIONS**

**CONTACT US
FOR A QUOTE**

Premium Reflective Traffic Mirrors



- >> Durable casing with reflective strips & impact resistant mirror
- >> Complete with brackets & fixings to fix the mirrors to a post or a wall/flat surface. These mirrors are adjustable for post sizes from 50 to 76mm (2" to 3") dia.

| Description | Visibility Distance | Weight kg | Model | Price |
|--|---------------------|-----------|---------|---------|
| Circular Traffic Mirrors with Reflective Edges | | | | |
| 600mm dia. | approx. 15 metres | 2.5 | TMRC60Z | £122.50 |
| 800mm dia. | approx. 15 metres | 5 | TMRC80Z | £202.90 |

| Description | Visibility Distance | Weight kg | Model | Price |
|---|---------------------|-----------|----------|---------|
| Rectangular Traffic Mirrors with Reflective Edges | | | | |
| 600 x 400mm | approx. 15 metres | 2 | TMR6040Z | £120.60 |
| 800 x 600mm | approx. 15 metres | 4 | TMR8060Z | £194.80 |

Indoor Mirrors



- >> TMN600Z - complete with wall/flat surface bracket & fixings
- >> TMN800Z - complete with brackets & fixings to fix the mirrors on to a 76mm (3") dia. post

| Description | Visibility Distance | Weight kg | Model | Price |
|-------------|---------------------|-----------|---------|--------|
| 600mm dia. | approx. 11 metres | 2 | TMN600Z | £50.40 |
| 800mm dia. | approx. 15 metres | 4.5 | TMN800Z | £73.20 |

Traffic Mirrors with Hoods



- >> Complete with hood for weather protection to help reduce sun glare
- >> Complete with brackets & fixings to fix the mirrors on to a 50mm (2") dia. post

| Description | Visibility Distance | Weight kg | Model | Price |
|-------------|---------------------|-----------|--------|--------|
| 450mm dia. | approx. 5 metres | 1 | TMH45Z | £47.10 |
| 600mm dia. | approx. 11 metres | 2 | TMH60Z | £52.05 |